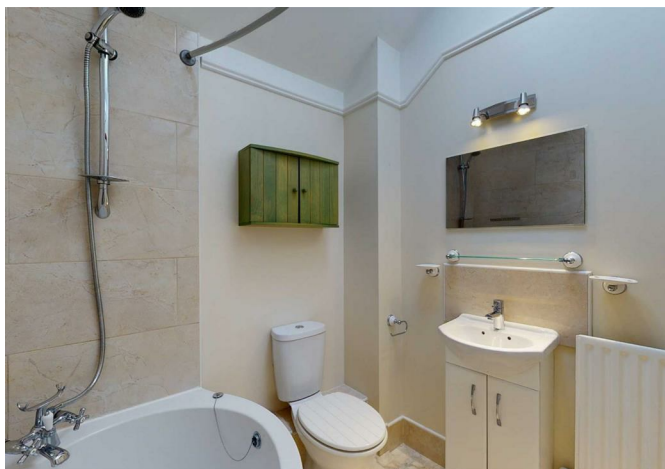


13, Shotton Hall, Shotton Lane Harmer Hill, Shrewsbury, SY4 3DW
£750 Per Month



13, Shotton Hall, Shotton Lane Harmer Hill, Shrewsbury, SY4 3DW

£750 Per Month

VIRTUAL TOUR AVAILABLE - An attractive and well-positioned two bedroom cottage situated in the attractive grounds of Shotton Hall just a short drive from Shrewsbury on the outskirts of the popular village of Harmer Hill. Parking for two cars.

Available: 07/02/26

Description

Comprising: Spacious living room with dining area to include flame effect electric fire, kitchen with integrated oven and gas hob, space for washing machine and full height fridge/freezer, understairs storage cupboard, stairs to spacious first floor landing, large double bedroom, further double bedroom with integrated overstairs storage, bathroom with shower over bath. Small private garden and access to Parking for two cars. Double glazing. Gas Central Heating with newly fitted gas boiler. Fantastic professionally maintained lawned communal gardens which extend to several acres and include an area of woodland. EPC E.



Unfurnished

Council Tax Band: B

Available: 7th February 2026

EPC: E

Floor Plans

GROUND FLOOR
APPROX. 38.5 SQ. METRES (414.0 SQ. FEET)



FIRST FLOOR
APPROX. 35.4 SQ. METRES (380.7 SQ. FEET)



TOTAL AREA: APPROX. 73.8 SQ. METRES (794.7 SQ. FEET)

We accept no responsibility for any mistake or inaccuracy contained within the floorplan. The floorplan is provided as a guide only and should be taken as an illustration only. The measurements, contents and positioning are approximations only and provided as a guidance tool and not an exact replication of the property.
Plan produced using PlanUp.

These particulars, whilst believed to be accurate are set out as a general outline only for guidance and do not constitute any part of an offer or contract. Intending purchasers should not rely on them as statements of representation of fact, but must satisfy themselves by inspection or otherwise as to their accuracy. No person in this firm's employment has the authority to make or give any representation or warranty in respect of the property.